



First European Holding Company Limited
Group Solvency & Financial Condition Report

(For financial year ended 31 December 2024)

Summary	7
Directors' statement in respect of the SFCR for the year ended 31 December 2024.....	7
A. Business and performance.....	8
A.1 Business	8
A.2 Underwriting performance	9
A.3 Investment performance	9
A.4 Performance of other activities	9
A.5 Any other information	9
B. System of governance	10
B.1 General information on the system of governance.....	10
B.2 Fit and proper requirements	11
B.3 Risk management system including the Own Risk and Solvency Assessment	11
B.4. Internal control system	12
B.5 Internal audit function	12
B.6 Actuarial function.....	12
B.7 Outsourcing.....	12
B.8 Any other information	12
C. Risk profile.....	13
C.1 Underwriting risk	13
C.2 Credit and counterparty default risk	13
C.3 Market risk	13
C.4 Liquidity risk	14
C.5 Operational risk.....	14
C.6 Other material risks	14
C.7 Any other information	14
D. Valuation for solvency purposes.....	15
D.1 Assets.....	15
D.2 Technical provisions	16
D.3 Other liabilities	17
D.4 Alternative method for valuation.....	18
D.5 Any other information	18
E. Capital management.....	19
E.1 Own funds	19

E.2 Solvency capital requirement and minimum capital requirement	19
E.3 Use of the duration-based equity risk sub-module in the calculation of the solvency capital requirement	20
E.4 Differences between the standard formula and any internal model used	20
E.5 Non-compliance with the minimum capital requirement and non-compliance with the solvency capital requirement	20
E.6 Any other information	20
Appendix A – High level process flow for the ORSA	21
Glossary	22
Financial Data	23

Summary

Summary
First European Holding Company Limited (First European Holding) is a company based in Malta. It has one subsidiary which is wholly owned, being First European Title Insurance Company Limited (First European Title), an insurance company based in Malta to provide title insurance to European real estate markets. Title insurance is classified as miscellaneous financial loss business and is a no fault insurance policy that can protect policyholders from a wide range of title risks associated with buying and owning land or property. It covers legal expenses and costs in resolving the problem or compensates for loss. First European Title has no other lines of business. This report will consider First European Holding, First European Title and both companies collectively (the First European Group). As First European Title is the only regulated insurance entity within the First European Group it is noted that the primary risks for the First European Group relate to First European Title.

This solvency and financial condition report (SFCR) provides information on the First European Group and an overview of its business and performance, system of governance, risk profile, valuation for solvency purposes and capital management. Ultimate responsibility for this report and these areas lies with the respective boards of the First European Group.

In the year to 31 December 2024, First European Title issued insurance policies with a total premium income of €3,649,000. This was an increase from the €2,801,000 in the year to 31 December 2023 following the improved economic environment across the region in which First European Title provides policies. In the year to 31 December 2024 First European Title recorded a net insurance service result of €181,000 (2023: €980,000) and a retained profit of €243,000 (2023: 1,130,000), calculated in accordance with International Financial Reporting Standards (IFRS).

In the year ended 31 December 2023, the First European Group reported a profit after tax of €241,000 (2023: €1,129,000).

On a Solvency II valuation basis, consolidated eligible own funds for the First European Group increased by €1,098,000 from €8,889,000 as at 31 December 2023 to €9,987,000 as at 31 December 2024.

The First European Group's eligible own funds solely comprise tier 1 unrestricted amounts classified as basic own funds. The solvency capital requirement (SCR) as at 31 December 2024, as calculated using the standard formula, was €2,017,000. The minimum capital requirement (MCR) was €2,700,000. Therefore, as at 31 December 2024, the First European Group's capital requirement was equal to the MCR and the ratio of eligible own funds to the MCR was 370%. The First European Group fully complied with the SCR and MCR as required during the year.

The First European Group operates the universally recognised three lines of defence model in respect of the governance of risk, as more fully set out in section B below.

The First European Group's most material risk from a capital requirement perspective is underwriting risk, followed by market risk and counterparty default risk, the combination of which account for the majority of the First European Group's SCR. These and other less significant risks are considered more fully in section C below.

The First European Group has not used any transitional arrangements in the calculation of its eligible own funds or SCR.

Directors' statement in respect of the SFCR for the year ended 31 December 2024

We acknowledge our responsibility for preparing the SFCR in all material respects in accordance with the Solvency II Regulations.

We are satisfied that:

- a) Throughout the reporting period, the First European Group has complied in all material respects with the requirements of the Solvency II Regulations as applicable to the First European Group; and
- b) It is reasonable to believe that the First European Group has continued so to comply and will continue so to comply in future.

Signed:

John A. Mader

Date:

25th March 2025

A. Business and performance

A.1 Business

The only regulated entity within the First European Group is First European Title. First European Title is a company limited by shares and incorporated in Malta with the registered number C88171. First European Title is authorised and regulated by the Malta Financial Services Authority (MFSA). Group supervision at a Malta level is also undertaken by the MFSA.

Contact details for the MFSA:

Malta Financial Services Authority
Triq l-Imdina, Zone 1
Central Business District, Birkirkara
CBD 1010

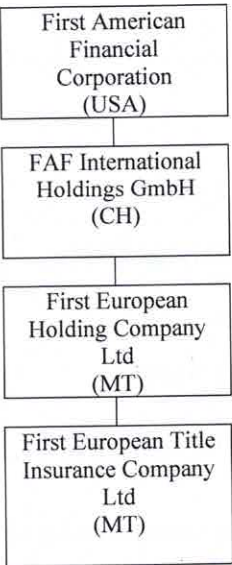
+356 2144 1155

The external auditor for the year ended 31 December 2024 was PricewaterhouseCoopers LLP:

78 Mill Street, Zone 5, Central Business District, Qormi, CBD 5090, Malta
Telephone: +356 2124 7000

First European Title is a wholly owned subsidiary of First European Holding. These two entities are consolidated as the First European Group. First European Holding is a wholly owned subsidiary of FAF International Holdings GmbH, a company incorporated in Switzerland. FAF International Holdings GmbH is a wholly owned subsidiary of First American Financial Corporation. First American Financial Corporation is a public company incorporated in the United States of America and listed on the New York Stock Exchange (NYSE: FAF).

A simplified group structure identifying where the First European Group is located within the worldwide group is set out below:



First European Title was established to issue title insurance in European real estate markets. Title insurance is classified as miscellaneous financial loss business and is a no-fault insurance policy that can protect policyholders from a wide range of title risks associated with buying and owning land and property. It covers legal expenses and costs in resolving the problem or compensates for loss. First European Title has permissions under class 16 – miscellaneous financial loss and class 17 – legal expenses.

A.2 Underwriting performance

The tables below analyse the underwriting performance, as assessed by the contribution to the contractual service margin (CSM) of policies issued in the year, for the European Group for each of the years 2024 and 2023. It is noted that the business is wholly attributable to miscellaneous financial loss insurance and is written within Europe, outside of the UK.

	2024 Actual €'000	2023 Actual €'000
Gross premiums earned	3,605	2,800
Reinsurance premium	(546)	(415)
Net premiums earned	<u>3,059</u>	<u>2,385</u>
Gross claims incurred	500	344
Reinsurers' share of claims	(176)	(169)
Net claims incurred	<u>324</u>	<u>175</u>
Underwriting result	2,735	2,210
Operating expenses	(1,912)	(1,833)
Contribution to CSM	<u>823</u>	<u>377</u>

As noted above, the increase in insurance business from the 2023 to the 2024 year reflects the improved economic environment during the period.

A.3 Investment performance

The investment performance for the year is detailed below, together with the prior year comparative:

	2024 €'000	2023 €'000
Income from corporate bonds	164	89
Income from other investments	<u>79</u>	<u>30</u>
	<u>243</u>	<u>119</u>
Gains on the realisation of investments	17	16
Less accumulated unrealised gains from prior years	(48)	(117)
Loss on disposal of investments	<u>(31)</u>	<u>(101)</u>
Unrealised gains on investments	<u>179</u>	<u>402</u>
Total investment income	<u>391</u>	<u>420</u>

Investment management expenses were €24,000 during 2024 (2023: €23,000).

It can be confirmed that, during 2024, there were no:

- Gains or losses on investments recognised directly in equity;
- investments in securitisations; or
- other material items of income and expenses relating to investments.

A.4 Performance of other activities

There was no other material income and no other material expenses incurred in either 2024 or 2023.

Operating expenses in A.2, above, include operating lease charges in respect of properties amounting to €115,000 in 2024 (2023: €50,000). The First European Group does not have any finance leases.

A.5 Any other information

There were no key events that materially impacted upon the First European Group during 2024 beyond those discussed elsewhere in this report.

B. System of governance

B.1 General information on the system of governance

The First European Group is committed to high standards of governance and transparency and has in place a governance structure to support this, which management considers more than adequate for the nature, scale and complexity of the risks inherent in the business. As First European Holding is a non-trading holding company, the governance structure described below relates to its wholly owned subsidiary, First European Title. The governance structure has not changed materially during the year.

The board meets at least four times a year. The following committees have been appointed by, and operate under terms of reference set by the board to assist the board in satisfying its responsibilities. The board did not appoint an audit committee, having obtained a waiver from the MFSA for SMEs, and retains responsibility for oversight of internal and external audit. These committees meet quarterly with minutes and reports provided to the board to assist with oversight, strategic discussions and the maintenance of effective systems and controls.

Committee	Key roles and responsibilities
Risk	To oversee the First European Group's risk management framework including strategic decisions and policies on risk management; the monitoring of risk appetite and tolerance; and the identification, measurement, management, monitoring and reporting of risk.
Underwriting	To oversee the underwriting of risk including the development of underwriting guidelines; changes in underwriting criteria and policy wording; the setting of underwriting criteria and limits.

The following functions were also identified and in place during the reporting period:

Function	Key roles and responsibilities
Claims	Undertakes claims handling and panel management of claims.
Finance	Ensures efficient and timely delivery of relevant and accurate financial and regulatory reporting, as well as the provision of capital and investment management information.
Human resources (HR)	Formulates, develops and implements effective HR strategies, policies and procedures including strategic aspects of change management, training & development, resourcing, plus pay and reward management.
Information technology (IT)	Implementation of IT strategy with responsibility for development, operations, strategy and project services, delivering efficient and effective IT solutions in all aspects of the business.
Legal	Advising and reporting to the board on changes in legislation, managing projects to implement operational changes.
Compliance	Responsible for providing compliance advice to the business and ensuring that regulations are complied with.
Internal audit	Carries out a cycle of audits following a risk-based approach with focus placed on identified key functions, providing assurance to the board and to the business.
Actuarial	Provides assurance and assistance in relation to claims and reserving, regulatory reporting, underwriting, reinsurance and the identification and assessment of risk.

Board members are appointed to ensure that the First European Group has in place a range of skills and competence at its most senior level to ensure that there is appropriate scrutiny and good governance.

All key policies are approved by the board. These include policies to support governance, underwriting performance and the internal control functions.

The First European Group's remuneration policy applies to all members of staff; it seeks to ensure that good corporate governance is maintained and that:

- The First European Group is able to attract, develop and retain high-performing and motivated employees;
- Employees are offered a competitive and market-aligned remuneration package, making fixed salaries a significant remuneration component;
- Employees feel encouraged to create sustainable results; and
- Goals set for staff are in alignment with business strategies and long term goals.

Members of staff receive fixed remuneration, determined by the role and position of the individual employee, including professional experience, skills, responsibility, job complexity and local market conditions.

In addition, staff may receive a discretionary performance related payment based upon the First European Group's financial results and individual performance.

Executive and non-executive directors receive fixed fees and do not receive performance-related remuneration.

B.2 Fit and proper requirements

The First European Group has in place a policy to ensure that all relevant employees and directors are fit and proper on appointment and remain fit and proper while performing their role. The core objectives of the policy are:

- to ensure compliance with the rules set out in the Insurance Business Act (Cap. 403);
- to determine on appointment whether relevant employees are competent to perform their role and meet the fit and proper standard;
- to ensure relevant employees will continue to be competent to perform their role and tested against and meet the fit and proper standard;
- to provide a basis and process for relevant employees to make known potential, perceived or real conflicts of interest;
- to ensure that all relevant employees are aware of this policy and are under a duty to report any areas of concern; and
- to notify the regulator when any changes or amendments are made in relation to the relevant employees, or when regulatory issues arise.

The policy sets out that it is the responsibility of every relevant employee to ensure that they continue to meet the fitness requirements and that the First European Group will support them in this obligation by providing appropriate training. As part of the fit and proper review process, the First European Group has arranged for the relevant employees to complete a declaration to confirm that they remain fit and proper including compliance with the regulatory requirements and to confirm that there are no conflicts of interest to declare.

B.3 Risk management system including the Own Risk and Solvency Assessment

Risk management is embedded within the First European Group through a risk management framework, which has been designed and implemented to support strategy, assist stakeholder confidence and to ensure that material risk is identified, managed, monitored and controlled as far as it can be. The risk function is also responsible for the production of the Own Risk and Solvency Assessment (ORSA) with the risk management framework used to support this.

The risk management framework also supports the board in the implementation of strategy and the ongoing assessment of this, in the following way:



- **Board:** Ownership of risk at board level, setting strategic objectives and risk appetite.
- **Business:** Own the risks within their own areas and are accountable for risk.
- **Risk Function:** Provides support and advice to the business to manage risks. Assists with the embedding and operation of the risk management strategies and policies.
- **Risk Committee:** Assists the board in satisfying their responsibilities in respect of risk.

Risks to the First European Group are monitored on an ongoing basis, with the business asked to consider any material changes at least quarterly. Quarterly risk reporting, including risk profile, is completed and provided to the risk committee along with supporting documentation.

Documented policies and procedures are in place in relation to the risk management framework and the ORSA, with the key policies reviewed and approved by the board.

The ORSA is completed at least annually. It incorporates an assessment of the strategy over the next five-year period and assesses the First European Group's solvency needs on a best estimate basis and under a number of stressed scenarios. The ORSA also considers whether the risk and capital profile remains appropriate and includes a review of capital management. Whenever a strategic change is considered, or a prescribed material predefined event occurs, the projections underlying the ORSA will be re-performed and the ORSA will be revised accordingly. Pre-

defined events include, for example, acquisitions, significant new products, reduction of solvency below critical values, significant changes in regulation or a significant governance failure.

The high-level process for the ORSA can be found at Appendix A.

B4. Internal control system

Each of the internal control functions comprising risk, internal audit, compliance and actuarial have the necessary resources, remit and authority to provide oversight and challenge within the First European Group. The First European Group operates the universally recognised three lines of defence model to provide assurance internally, as well as to all external stakeholders. The internal audit function is independent and all other control functions are operationally independent.

Compliance is ultimately the responsibility of all members of staff within the identified control framework, with the ethos of compliance with regulation and good governance communicated by the board. The compliance function employs a dedicated Compliance Officer. The compliance function is responsible for providing compliance advice to the business and ensuring that regulations are complied with. It provides the board with a quarterly report, which contains any significant issues identified and also includes any regulatory updates when required.

B.5 Internal audit function

Internal audit is outsourced to First American Financial Corporation, a representative of which attends board meetings, which then sub-contracts it to RSM Risk Assurance Services LLP in Malta. Internal audit reports directly to the board, and is overseen by an independent non-executive director. The function carries out a cycle of audits following a risk-based approach with focus placed on identified key functions, providing assurance to the board and to the business. To ensure that the independence of internal audit function is maintained, internal auditors do not have direct operational responsibility or authority over any of the activities audited. Accordingly, they will not implement internal controls, develop procedures, install systems, prepare records, or engage in any other activity that may impair judgement.

B.6 Actuarial function

The actuarial function is outsourced to Milliman LLP and a representative attends the board meetings. The actuarial function is overseen by a non-executive director. The function provides assurance and assistance in relation to claims and reserving, regulatory reporting, underwriting, reinsurance and the identification and assessment of risk.

B.7 Outsourcing

In addition to the outsourcing of the internal audit and actuarial functions, the investment management activity is also considered a critical outsourced function. Arrangements are in place with third party investment managers, Investec Wealth & Investments Ltd (part of Rathbones Group plc), to manage the First European Group's portfolio of bond investments. This relationship is overseen by a non-executive director. Investment guidelines are agreed by the board. Management information on investments is reviewed by the board at least on a quarterly basis.

B.8 Any other information

The board considers that the First European Group's system of governance is appropriate to the size, nature and complexity of the business.

C. Risk profile

The First European Group's risk profile is regularly reviewed and communicated to the board.

The First European Group uses the standard formula to quantify the risk inherent in its business and the solvency capital requirement for the First European Group for the year ended 31 December 2024 across each of the risk modules is set out at E2 below.

Under the standard formula, title insurance is classified as miscellaneous financial loss business which attracts high premium and reserve capital loadings when calculating the SCR compared to other lines of direct insurance business. Therefore, the board considers that the resultant solvency capital requirement is appropriately prudent when considering the nature of title insurance and the coverage provided to policyholders, and has concluded that use of the standard formula is appropriate.

The First European Group's most material risk from a capital requirement perspective is underwriting risk, followed by market risk and counterparty default risk, the combination of which account for the majority of the First European Group's solvency capital requirement as shown at E2 below. These and other categories of risk are considered below.

C.1 Underwriting risk

Underwriting risk is the risk to the First European Group of an adverse change in the value of insurance liabilities which could arise from a number of factors including an inadequate assessment or understanding of the risk, incorrect pricing or incorrect reserving assumptions due to a miscalculation of the size or frequency of future claims.

Title insurance is a very specialist line of business. Sums insured are often high and the risks covered are known and existing risks. To manage and mitigate this risk the First European Group's underwriters are highly trained, experienced property professionals. The First European Group also benefits from the experience of its reinsurance companies, First Title Insurance plc and First American Title Insurance Company (FATIC), the latter of which has over 125 years' experience in writing title insurance and paying title insurance claims.

The chief mitigation for underwriting risk is reinsurance to diminish the impact of large losses. The First European Group has extensive reinsurance arrangements in place. The First European Group's primary reinsurance for title insurance business that it writes is on a non-proportional treaty / risk attaching basis with First Title Insurance plc.

The table below sets out the sensitivity of the First European Group's profit after tax, net assets and solvency ratio for the reporting period to changes in incurred claims costs as a result of underwriting risk. The assumptions show the effect of an increase or a decrease in incurred claim costs in the year at levels of both 10% and 20% of the solvency II net technical provisions, on the basis that there is no change in future management actions, the year-end technical provisions or in the SCR. The effect on the First European Group's solvency ratio, is not material.

Assumptions	Profit after tax €'000	Net Assets €'000	Solvency Ratio %
Actual 2024 profit and net assets	241	7,519	370
Increase in claims cost of 20%	49	7,327	363
Increase in claims cost of 10%	146	7,423	366
Decrease in claims cost of 10%	338	7,615	373
Decrease in claims cost of 20%	434	7,711	377

C.2 Credit and counterparty default risk

Credit and counterparty default risk is the risk of loss to, or of adverse change in the financial situation of, the First European Group resulting from fluctuations in the credit standard of issuers of securities, counterparties and any debtors to which the First European Group is exposed. This risk also includes the risk that a counterparty defaults on payments due under the terms of arrangements in place. The First European Group's two main risks in this area are:

- the default of credit institutions holding the First European Group's cash deposits; and
- the default of reinsurers, mitigated by ensuring that the reinsurers are of adequate financial standing and that amounts due are settled promptly in accordance with contractual terms.

Management information is provided to the board quarterly and monitored on a regular basis.

C.3 Market risk

Market risk for the First European Group encompasses the risk of adverse changes in the value of the First European Group's assets or liabilities as a result of changes in market variables such as interest rates and currency exchange rates. Market risk also includes concentration risk, which is the increased exposure to losses arising from a single event due to a lack of diversification of invested funds. These risks are managed by

investment policies and guidelines designed to ensure investments are made in accordance with the “prudent person principle” such that they are of sufficient security, quality, liquidity and diversity to meet future liabilities and to limit concentration risk exposure. The First European Group does not invest in derivative products, all investments held are traded on regulated financial markets, and cash deposits are held with appropriate approved institutions. First European Group also monitors the financial risks of climate change in relation to investments held by the company, with portfolio performance against a number of environmental measures considered quarterly by the Board.

The table below sets out the sensitivity of the First European Group’s profit after tax, net assets and solvency ratio for the reporting period to changes in the market value of investments as at 31 December 2024 on the basis that there is no change in future management actions. Assumptions relating to the market values of bond investments are:

- Scenario 1: A decrease in the value of bond investments of 10%; and
- Scenario 2: An increase in the value of bond investments of 10%.

Assumptions	Profit after tax €'000	Net Assets €'000	Solvency Ratio %
Actual 2024 profit and net assets	241	7,519	370
Scenario 1	(422)	6,855	345
Scenario 2	905	8,183	394

C.4 Liquidity risk

Liquidity risk is the risk that the First European Group is unable to realise assets held in order to settle its financial obligations when they fall due. The First European Group mitigates this risk through investment guidelines that are designed to ensure sufficiently liquid assets are always available to ensure any urgent need that arises can be met. It should be noted that as at 31 December 2024, cash amounts, including deposits held, exceeded both the standard formula SCR and the MCR. The First European Group does not recognise any expected profit included in future premiums and therefore the settlement of these amounts does not contribute to liquidity risk for the First European Group.

C.5 Operational risk

Operational risk is the risk to the First European Group of loss, resulting from inadequate or failed internal processes, people (including the risk of failing to attract and maintain talent) and systems or from external events. Risks are mitigated through ensuring the existence of up-to-date documented policies and procedures for all key operational areas, staff training, regular performance reviews, internal audit and other independent reviews. In respect of monitoring people risk, First European Group offers staff a discretionary performance related payment based upon First European Group’s financial results and individual performance, in addition to a competitive and market-aligned remuneration package, and promotes staff engagement with all staff communication events and involvement in corporate social responsibility initiatives.

C.6 Other material risks

In addition to the risk categories above, the First European Group also monitors, manages and controls:

- conduct risk, the risk that the behaviour of the First European Group either collectively or by individuals will result in a failure to deliver good outcomes for customers or the market;
- group risk, the risk that the First European Group may be adversely affected by its relationships with other entities within the wider international group or by risks which may affect the international group as a whole;
- reputational risk, the risk to the First European Group through deterioration of its reputation or standing due to negative perception of any entities within the First European Group, the wider international group or associated companies, among customers, the market and its shareholders; and
- strategic risk, the risk to current and prospective earnings or capital for the First European Group arising from adverse business decisions, a failure to identify key opportunities, improper implementation of decisions or lack of responsiveness to industry changes.

C.7 Any other information

The First European Group continues to monitor and review potential and emerging risks to the business and puts in place controls to mitigate these where appropriate. In addition, the risk management framework is used to monitor any threats to these areas of risk and to identify any potential areas of risk. These are also subjected to rigorous stress and scenario testing. Testing is carried out on a forward-looking basis incorporating any future strategy and projected financial data. This data is then stressed to reflect a variety of potential adverse scenarios and business challenges that the business may face. Factors applied to the data are considered severe but potentially realistic. The testing that has been completed has provided assurance to the board that the First European Group is well managed and sufficiently capitalised to be able to deal with significant events that may occur over the next five years, based on the scenarios considered. The board does not consider there to be any reasonable foreseeable risk of non-compliance with the First European Group’s MCR or SCR.

D. Valuation for solvency purposes

The First European Group balance sheet is summarised below detailing the values of assets and liabilities on both Solvency II and statutory accounting bases.

As at 31 December 2024	Solvency II value €'000	Statutory accounting value €'000
Total assets (excluding reinsurance contract assets / recoveries on technical provisions)	11,761	11,584
Net technical provisions	(1,012)	(3,807)
Liabilities (other than insurance contract liabilities / technical provisions)	(762)	(258)
Total eligible own funds / net assets	9,987	7,519

The Solvency II balance sheet has been calculated in accordance with Directive 2009/138/EC of the European Parliament and of the Council (the Solvency II Directive), specifically Articles 75 to 86 of the Solvency II Directive text.

The statutory accounting balance sheet has been calculated in accordance with International Financial Reporting Standards (IFRS) as adopted by the EU. Net technical provisions on a statutory accounting basis comprise the insurance contract liabilities less the reinsurance contract assets as more fully set out in D.2 below.

D.1 Assets

The following table analyses the First European Group's total assets (excluding reinsurance recoveries on technical provisions) as at 31 December 2024:

As at 31 December 2024	Solvency II value €'000	Statutory accounting value €'000
Other assets	520	288
Intangible assets	-	151
Fixed assets	26	26
Corporate bonds	7,062	6,969
Cash and cash equivalents, and deposits	4,153	4,150
Total assets (excluding reinsurance recoveries on technical provisions)	11,761	11,584

Other assets

Other assets represent amounts paid by the First European Group prior to 31 December 2024 for goods and services due to be received after 31 December 2024. For Solvency II, accrued interest on cash deposits and the bond investments held as at 31 December 2024 is included within the value of the "cash and cash equivalents, and deposits" and "corporate bonds" held respectively, as opposed to the statutory accounts whereby the accrued interest is included within other assets.

Additionally, the amount of premiums due in relation to policies issued is included within "other assets" for Solvency II, however is considered within future cash in flows within the insurance contract liabilities within the statutory accounts.

Corporate bonds

Corporate bonds are held at fair value, being at quoted market price in active markets for identical assets for both Solvency II and statutory accounts. The market prices are readily available, and the bonds are actively traded, details of which are provided in a statement produced by the portfolio manager. There were no significant estimates and judgements used in valuing the asset due to the nature of the asset.

For Solvency II, accrued interest on the bond investments held as at 31 December 2024 is included within the value of the bond investments held, but for statutory accounts, the accrued interest is included within other assets.

Cash and cash equivalents

Cash and cash equivalents includes cash in hand, deposits held at call with banks and other short-term highly liquid investments with original maturities of three months or less. There are no significant estimates or judgements used in valuing these assets due to their nature.

For Solvency II, accrued interest on cash deposits as at 31 December 2024 is included within the value of the cash and cash equivalents, but for statutory accounts, the accrued interest is included within other assets.

D.2 Technical provisions

Technical provisions for Solvency II are defined as the probability-weighted average of future cash flows, discounted to take into account the time value of money considering all possible future scenarios. Technical provisions are generally grouped into the following key components:

- Claims provisions, which relate to the best estimate of provisions relating to the earned exposure.
- Premium provisions, which relate to the best estimate of provisions that relate to the unearned exposure. As such, First European Group's technical provisions for Solvency II purposes do not comprise premium provisions.
- Risk margin, which is an additional provision to bring the best estimate to the level required to transfer the insurance obligations to a third party.

First European Group's net technical provisions for Solvency II comprise the gross best estimate technical provisions less the reinsurers' share of those technical provisions plus a risk margin as follows:

	Miscellaneous financial loss €'000
Gross best estimate technical provisions	1,736
Reinsurers' share of technical provisions	(830)
Best estimate liabilities net of reinsurance	906
Risk margin	106
Net technical provisions	1,012

The technical provisions within the First European Group are wholly attributable to First European Title.

The gross best estimate technical provisions and reinsurers' share of technical provisions represent the discounted cash flows of the undiscounted claims provisions, as calculated by the actuarial function and reviewed by the board and executive team. Standard actuarial techniques such as the basic chain ladder, the expected loss ratio and the Bornhuetter-Ferguson methods were used to model the undiscounted claims provisions. The key assumptions used in the calculation of the provisions were the loss development factors (derived from historical data and expert judgement), consideration of events not in data (ENID) and estimation of costs associated with the run-off of policies in-force at the balance sheet date. First European Title does not recognise any expected profit included in future premiums and does not hold an unearned premium reserve.

As noted above, title insurance, classified as miscellaneous financial loss business, is a no-fault insurance policy that can protect from a wide range of title risks associated with buying and owning a property. Risks in relation to this line of business are generally known at the point the policy is issued and are not materially affected by, for example, subsequent environmental events. Uncertainty is therefore primarily due to whether or not the known title risk results in a claim and if so the quantum of that claim. Title insurance claim liabilities have tended to be long-tailed, meaning that it often takes several years for all the claims arising from an underwriting year to be notified and for them then to be settled and paid. Therefore, many years of historical experience are needed to provide a sound basis for the projection of future claims development.

The First European Group's chief mitigation for underwriting risk is reinsurance to guard against large losses. The reinsurance for the liabilities taken on as a result of the Part VII transfer on 28 April 2020 is with FATIC, a subsidiary of FAFC, on a non-proportional treaty / risk-attaching basis. For policies issued subsequently by First European Title, reinsurance is provided by First Title Insurance plc, also on a non-proportional treaty / risk-attaching basis.

The required risk margin has been calculated in accordance with risk margin methodology 3 as per guideline 62 within the European Insurance and Occupational Pensions Authority "Guidelines on the valuation of technical provisions". The risk margin is calculated as the amount of capital needed to support the solvency capital ratio over the lifetime of the business.

The First European Group has not used any simplifications in the calculation of its technical provisions.

The First European Group does not apply the matching adjustment referred to in Article 77b of the Solvency II Directive.

The First European Group does not use the volatility adjustment referred to in Article 77d of the Solvency II Directive.

The First European Group does not apply the risk-free interest rate-term structure referred to in Article 308c of the Solvency II Directive.

The First European Group does not apply the transitional deduction referred to in Article 308d of the Solvency II Directive.

For statutory accounts, the net technical provisions are calculated in accordance with IFRSs as adopted by the EU as follows:

	Miscellaneous financial loss €'000
Gross insurance best estimate liabilities and fulfilment cash flows	2,353
Gross risk adjustment for non-financial risk	427
Gross contractual service margin	2,571
Insurance contract liabilities	5,351
Reinsurance best estimate recoveries and fulfilment cash flows	(760)
Reinsurance risk adjustment for non-financial risk	(-)
Reinsurance contractual service margin	(784)
Reinsurance contract assets	(1,544)
Net insurance balance recognised on the balance sheet	3,807

The gross insurance best estimate liabilities and fulfilment cash flows and reinsurance best estimate recoveries and fulfilment cash flows represent the discounted cash flows of related receivables and payables plus the undiscounted claims provisions, as calculated by the actuarial function and reviewed by the board and executive team. Standard actuarial techniques such as the basic chain ladder, the expected loss ratio and the Bornhuetter-Ferguson methods were used to model the undiscounted claims provisions. The key assumptions used in the calculation of the provisions were the loss development factors (derived from historical data and expert judgement), consideration of events not in data (ENID) and estimation of costs associated with the run-off of policies in-force at the balance sheet date.

The risk adjustment for non-financial risk represents the compensation that the First European Group would require if it was to charge the policyholder an explicit separate amount for bearing non-financial risk.

The gross contractual service margin represents the unearned profit in relation to policies issued prior to the end of the reporting period, which is to be recognised over the coverage period of such policies, as assessed by the expected claims period.

The main valuation principles of Solvency II leading to differences from statutory accounting are:

- The recognition of the risk adjustment as recognised under IFRS 17;
- The consideration of the deferred profit (CSM) as recognised under IFRS 17.

D.3 Other liabilities

The following table analyses the First European Group's liabilities other than technical provisions as at 31 December 2024:

As at 31 December 2024	Solvency II value €'000	Statutory accounting value €'000
Liabilities (excluding technical provisions)		
Deferred tax liabilities	135	4
Insurance and reinsurance payables	287	-
Accrued expenses and other liabilities	340	254
Total Liabilities (excluding technical provisions)	762	258

Deferred tax liability

The deferred tax liability arises primarily as a result of the best estimate technical provisions included for Solvency II being lower in value than the technical provisions recognised in the statutory accounts. Deferred tax liabilities are calculated under the liability method for all temporary differences using First European Group's effective tax rate of 5%.

Insurance and reinsurance payables

These amounts represent unsettled expenses incurred in relation to issuing insurance contracts during the year ended 31 December 2024. These amounts are reflected within the insurance contract liabilities as future out flows within the statutory accounts.

Accrued expenses and other liabilities

These amounts represent expenses incurred relating to the year ended 31 December 2024 for which payment had not yet been requested and amounts owed to other group companies for which amounts were outstanding as at 31 December 2024.

For the statutory accounting value, any accrued amounts relating to expenses within contract boundaries as considered under IFRS 17 are included as future cash out flows within the insurance contract liabilities and only unpaid expenses which fall outside of the contract boundaries are included within accrued expenses. For the solvency II valuation, all accrued expenses are included within the accrued expenses and other liabilities.

D.4 Alternative method for valuation

The First European Group does not use an alternative method for valuation.

D.5 Any other information

There is no other material information regarding the valuation of assets or liabilities for solvency purposes.

The directors are satisfied that the First European Group remains a going concern. In making this assessment, the directors considered the ongoing impact of exceptionally high interest and inflation rates on the First European Group by looking at the impact on income, the level of capital held and the prospects and risks over the next 12 months. The directors are satisfied that the First European Group have the appropriate resources and strategy to remain a going concern.

The directors also considered First European Group's exposure to credit risk whereby a significant portion of the assets relate to liquid government bonds and bonds issued by reputable companies. First European Group's cash and cash equivalents are likewise held by reputable banks.

E. Capital management

The standard formula has been adopted for the calculation of the capital position in accordance with the Solvency II Directive and the board considers that there was more than sufficient solvency capital for the business throughout the reporting period. The board maintains adequate eligible funds in excess of the solvency capital requirement to meet its business objectives. The business objectives are set quantitatively and qualitatively by the board annually on a forward-looking five-year basis. The five-year plan is tested using plausible scenarios and circumstances, identifying potential business stresses and so ensuring that adequate eligible funds in excess of the standard formula SCR are maintained.

Current eligible own funds, standard formula SCR and risks to the business are monitored by the board on a quarterly basis, to identify any material variances that may necessitate a review of that five-year plan.

E.1 Own funds

Set out below is a table showing a reconciliation between the excess of assets over liabilities and equity shown in the First European Group's statutory accounts compared to total eligible own funds shown in the Solvency II balance sheet as at 31 December 2024.

	As at 31 December 2024 €'000
Retained earnings under IFRS basis	1,661
Differences between IFRS and Solvency II as at 31 December 2024	2,476
Excess of assets over liabilities and equity on a Solvency II basis	4,137
Tier 1 share capital	5,850
Total Solvency II eligible own funds	9,987

Own funds as at 31 December 2024, and throughout the year, were composed solely of tier 1 unrestricted amounts, classified as basic own funds. Share capital relates wholly to ordinary paid-up share capital. There is therefore no difference between own funds and basic own funds, and these were as follows over the reporting period:

	As at 31 December 2024 €'000	As at 31 December 2023 €'000
Ordinary share capital	5,850	5,850
Reconciliation reserve	4,137	3,039
Total eligible own funds for Solvency II	9,987	8,889

The increase in the reconciliation reserve reflects the result for the year ended 31 December 2024 as well as the change in differences between IFRS and Solvency II for the year ending 31 December 2024. At 31 December 2024 cash and deposits held exceeded both the standard formula SCR and the MCR to ensure that liquid assets were available to meet liabilities as they fall due.

E.2 Solvency capital requirement and minimum capital requirement

The solvency capital requirement for the First European Group at the end of the reporting period is detailed as follows:

	As at 31 December 2024 €'000	As at 31 December 2023 €'000
Underwriting risk	1,440	1,430
Market risk	854	678
Counterparty default risk	278	347
Diversification benefit	(569)	(525)
Basic solvency capital requirement	2,003	1,930
Operational risk	120	84
Loss-absorbing capacity of deferred taxes	(106)	(90)
Solvency capital requirement	2,017	1,924

As shown in the above table, the amount with which the Solvency Capital Requirement has been adjusted for the loss-absorbing capacity of deferred taxes is a reduction of €106,000 (2023: reduction of €90,000) which arises primarily as a result of the best estimate technical provisions included for Solvency II being lower in value than the technical provisions recognised in the statutory accounts as detailed in section D.3 above.

The minimum capital requirement for the First European Group is the absolute floor of €2,700,000 in accordance with the Solvency II Regulations.

The own funds and capital requirements over the reporting period are detailed as follows:

	As at 31 December 2024 €'000	As at 31 December 2023 €'000
Eligible own funds to cover the SCR and MCR	9,987	8,889
Standard formula SCR	2,017	1,924
MCR	2,700	2,700
Ratio of eligible own funds to standard formula SCR	495%	462%
Ratio of eligible own funds to MCR	370%	329%

The First European Group does not use undertaking specific parameters in the calculation of the SCR.

The capital requirements as at 31 December 2024 are explained further below.

Market risk

The increase in market risk reflects the additional funds invested in deposit holdings during the year from cash at bank.

Counterparty default risk

The decrease in counterparty default risk is as a result of the decrease in cash at bank, due to the increase held in deposit accounts, and the reduction in the exposure to reinsurance counterparties as a result of the reduction in reinsurers' share of technical provisions in the period.

E.3 Use of the duration-based equity risk sub-module in the calculation of the solvency capital requirement

The First European Group does not use the duration-based equity risk sub-module in the calculation of the solvency capital requirement.

E.4 Differences between the standard formula and any internal model used

The First European Group does not use an internal model.

E.5 Non-compliance with the minimum capital requirement and non-compliance with the solvency capital requirement

The First European Group evaluated its capital requirement in relation to that required as per the standard formula. The First European Group has maintained sufficient capital to adhere to both the SCR and MCR requirements as well as maintaining an additional margin of capital to ensure compliance is continued in the event of a deterioration in financial standing.

E.6 Any other information

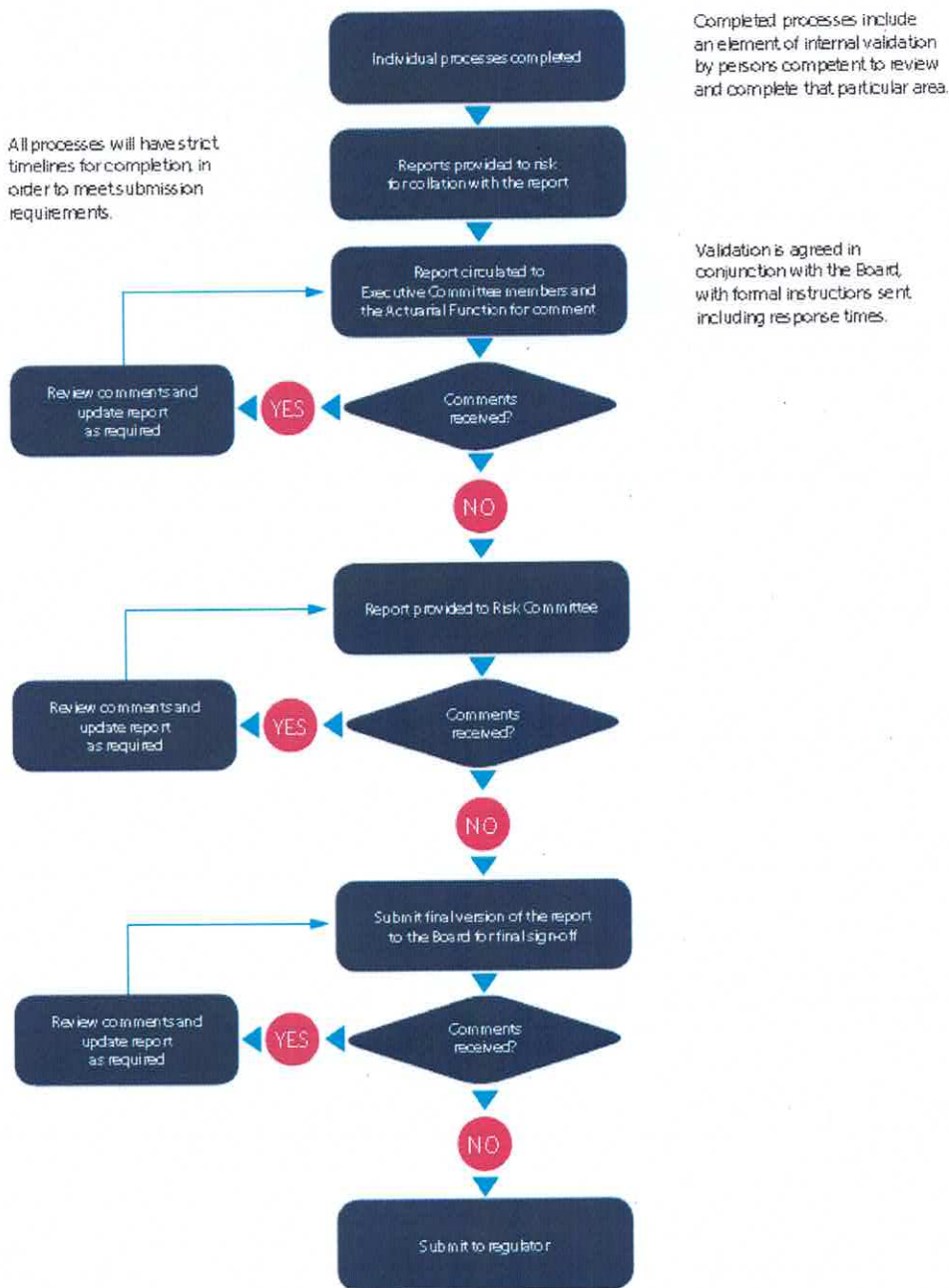
The First European Group can confirm that:

- there are no restrictions on the transferability of own funds within the First European Group;
- that no transitional provisions are being used for calculating own funds; and
- the SCR is not subject to supervisory assessment.

In addition, the directors are satisfied that the First European Group remains a going concern. As disclosed in section D.5, the directors considered the impact of the economic environment on the First European Group in making this assessment. The underlying business that is being insured (i.e. title insurance policies) is assessed to be not directly impacted by such risks. However, management continue to monitor these and act accordingly.

First European Group's exposure to credit risk was also looked into by considering the nature and quality of assets, as well as, the counterparties' credit standing based on the information available to date. On this basis, the directors believe that First European Group is not exposed to significant credit risk.

Appendix A – High level process flow for the ORSA



Glossary

Basic Own Funds	Eligible own funds that generally consist of balance sheet amounts but which exclude ancillary own funds, the inclusion of which within basic own funds requires regulatory approval.
Best Estimate	The expected present value of future cash flows for an insurer's insurance obligations, calculated using best estimate assumptions projected over the insurance contracts' run-off period, and with no allowance, explicit or implicit, for optimism or prudence.
EIOPA	European Insurance and Occupational Pensions Authority
Eligible Own Funds	Capital available to cover the SCR and MCR, calculated on a Solvency II basis. This can include the excess of assets over liabilities on the balance sheet and subordinated liabilities.
FAFC	First American Financial Corporation, the ultimate parent company of the First European Group, based in the USA.
FATIC	First American Title Insurance Company, a subsidiary of FAFC and the main provider of reinsurance to First Title Insurance plc as well as First European Title for the business assumed within the Part VII transfer.
FAFIH	FAF International Holdings GmbH, the immediate parent company of First European Holding Company, based in Switzerland.
The First European Group	The reference to both First European Holding and its only subsidiary, which is 100% owned, First European Title Insurance Company Limited.
First European Holding	First European Holding Company Limited, the immediate parent undertaking of First European Title Insurance Company Limited.
First European Title	First European Title Insurance Company Limited, an insurer regulated by the Malta Financial Services Authority providing title indemnity insurance to the European markets.
FTI	First Title Insurance plc, the main provider of reinsurance to First European Title Insurance Company Limited in respect of new business written.
IBNR	Incurred but not yet reported; reserves that are established for claim events that have materialised, but have not as yet been reported to the insurer.
IFRS	International Financial Reporting Standards
NYSE	New York Stock Exchange
MCR	Minimum capital requirement: the minimum amount of capital that an insurer needs to hold to cover its risks under the Solvency II framework, failing which it is likely that the regulator would withdraw the insurer's authorisation.
MFSA	Malta Financial Services Authority.
ORSA	Own risk and solvency assessment, an internal process undertaken by insurers and reinsurers to assess their overall solvency needs taking into account their specific risk profile and to identify, assess, monitor, manage and report the short and long term risks faced.
Risk Margin	The amount an insurance company would require, over and above the best estimate liabilities, to take over and meet the whole portfolio of insurance obligations.
SCR	Solvency capital requirement: the amount of capital the regulator requires an insurer to hold to meet the requirements of the Solvency II regulatory framework. The calculation of the SCR is designed to ensure that all quantifiable risks are taken into account with the amount established covering existing business as well as new business expected over the course of a twelve-month period.
Solvency II	A European Union Directive setting out a single set of prudential and supervisory requirements for almost all European insurance and reinsurance companies. Solvency II came into force in January 2016.
Standard Formula	The methodology used by a firm to calculate its SCR as prescribed by the EIOPA. Alternatively, firms may use an internal model.
Subordinated Liabilities	Loans or security that ranks below other loans and securities, when assessing claims on an insurer's assets or earnings.
Technical Provisions	The aggregate of the best estimate liabilities plus the risk margin, representing the amount an insurance company would require to assume the whole portfolio of insurance obligations.

First European

Solvency and Financial Condition Report

Disclosures

31 December

2024

(Monetary amounts in EUR thousands)

General information

Participating undertaking name	First European Holding Company Limited
Group identification code	2138004TRCK9JOHH6T51
Type of code of group	LEI
Country of the group supervisor	MT
Language of reporting	en
Reporting reference date	31 December 2024
Currency used for reporting	EUR
Accounting standards	IFRS
Method of Calculation of the group SCR	Standard formula
Method of group solvency calculation	Method 1 is used exclusively
Matching adjustment	No use of matching adjustment
Volatility adjustment	No use of volatility adjustment
Transitional measure on the risk-free interest rate	No use of transitional measure on the risk-free interest rate
Transitional measure on technical provisions	No use of transitional measure on technical provisions

List of reported templates

- S.02.01.02 - Balance sheet
- S.05.01.02 - Premiums, claims and expenses by line of business
- S.05.02.04 - Premiums, claims and expenses by country
- S.23.01.22 - Own Funds
- S.25.01.22 - Solvency Capital Requirement - for groups on Standard Formula
- S.32.01.22 - Undertakings in the scope of the group

S.02.01.02

Balance sheet

		Solvency II value
Assets		C0010
R0030	Intangible assets	
R0040	Deferred tax assets	
R0050	Pension benefit surplus	
R0060	Property, plant & equipment held for own use	26
R0070	Investments (other than assets held for index-linked and unit-linked contracts)	10,169
R0080	<i>Property (other than for own use)</i>	0
R0090	<i>Holdings in related undertakings, including participations</i>	0
R0100	<i>Equities</i>	0
R0110	<i>Equities - listed</i>	
R0120	<i>Equities - unlisted</i>	
R0130	<i>Bonds</i>	7,062
R0140	<i>Government Bonds</i>	0
R0150	<i>Corporate Bonds</i>	7,062
R0160	<i>Structured notes</i>	0
R0170	<i>Collateralised securities</i>	0
R0180	<i>Collective Investments Undertakings</i>	0
R0190	<i>Derivatives</i>	
R0200	<i>Deposits other than cash equivalents</i>	3,108
R0210	<i>Other investments</i>	0
R0220	Assets held for index-linked and unit-linked contracts	
R0230	Loans and mortgages	0
R0240	<i>Loans on policies</i>	
R0250	<i>Loans and mortgages to individuals</i>	
R0260	<i>Other loans and mortgages</i>	
R0270	Reinsurance recoverables from:	831
R0280	<i>Non-life and health similar to non-life</i>	831
R0290	<i>Non-life excluding health</i>	831
R0300	<i>Health similar to non-life</i>	
R0310	<i>Life and health similar to life, excluding index-linked and unit-linked</i>	0
R0320	<i>Health similar to life</i>	
R0330	<i>Life excluding health and index-linked and unit-linked</i>	
R0340	<i>Life index-linked and unit-linked</i>	
R0350	Deposits to cedants	0
R0360	Insurance and intermediaries receivables	323
R0370	Reinsurance receivables	7
R0380	Receivables (trade, not insurance)	
R0390	Own shares (held directly)	
R0400	Amounts due in respect of own fund items or initial fund called up but not yet paid in	0
R0410	Cash and cash equivalents	1,046
R0420	Any other assets, not elsewhere shown	190
R0500	Total assets	12,592

S.02.01.02

Balance sheet

		Solvency II value
		C0010
Liabilities		
R0510	Technical provisions - non-life	1,842
R0520	<i>Technical provisions - non-life (excluding health)</i>	1,842
R0530	<i>TP calculated as a whole</i>	
R0540	<i>Best Estimate</i>	1,736
R0550	<i>Risk margin</i>	106
R0560	<i>Technical provisions - health (similar to non-life)</i>	0
R0570	<i>TP calculated as a whole</i>	
R0580	<i>Best Estimate</i>	
R0590	<i>Risk margin</i>	
R0600	Technical provisions - life (excluding index-linked and unit-linked)	0
R0610	<i>Technical provisions - health (similar to life)</i>	0
R0620	<i>TP calculated as a whole</i>	
R0630	<i>Best Estimate</i>	
R0640	<i>Risk margin</i>	
R0650	<i>Technical provisions - life (excluding health and index-linked and unit-linked)</i>	0
R0660	<i>TP calculated as a whole</i>	
R0670	<i>Best Estimate</i>	
R0680	<i>Risk margin</i>	
R0690	Technical provisions - index-linked and unit-linked	0
R0700	<i>TP calculated as a whole</i>	
R0710	<i>Best Estimate</i>	
R0720	<i>Risk margin</i>	
R0740	Contingent liabilities	
R0750	Provisions other than technical provisions	
R0760	Pension benefit obligations	
R0770	Deposits from reinsurers	
R0780	Deferred tax liabilities	134
R0790	Derivatives	
R0800	Debts owed to credit institutions	
R0810	Financial liabilities other than debts owed to credit institutions	
R0820	Insurance & intermediaries payables	
R0830	Reinsurance payables	76
R0840	Payables (trade, not insurance)	211
R0850	Subordinated liabilities	0
R0860	<i>Subordinated liabilities not in BOF</i>	
R0870	<i>Subordinated liabilities in BOF</i>	0
R0880	Any other liabilities, not elsewhere shown	340
R0900	Total liabilities	2,604
R1000	Excess of assets over liabilities	9,987

Premiums, claims and expenses by line of business

[illegible]

S.05.02.04
Premiums, claims and expenses by country

Non-life

	C0010	C0020	C0030	C0040	C0050	C0060	C0070
R0010	Home Country	Top 5 countries (by amount of gross premiums written) - non-life obligations					Total Top 5 and home country
		IT	PL	ES	NL	FR	
	C0080	C0090	C0100	C0110	C0120	C0130	C0140
Premiums written							
R0110	Gross - Direct Business	1,028	951	500	437	361	3,276
R0120	Gross - Proportional reinsurance accepted						0
R0130	Gross - Non-proportional reinsurance accepted						0
R0140	Reinsurers' share	154	143	75	66	54	491
R0200	Net	0	874	808	425	307	2,785
Premiums earned							
R0210	Gross - Direct Business	1,028	951	500	437	361	3,276
R0220	Gross - Proportional reinsurance accepted						0
R0230	Gross - Non-proportional reinsurance accepted						0
R0240	Reinsurers' share	154	143	75	66	54	491
R0300	Net	0	874	808	425	307	2,785
Claims incurred							
R0310	Gross - Direct Business	283	323	138	120	107	971
R0320	Gross - Proportional reinsurance accepted						0
R0330	Gross - Non-proportional reinsurance accepted						0
R0340	Reinsurers' share	120	66	58	51	38	333
R0400	Net	0	163	257	80	69	639
R0550	Expenses incurred	605	546	294	249	206	1,900
R1210	Balance - other technical expenses/income						
R1300	Total technical expenses						1,900

Own Funds

Ordinary share capital (gross of own shares)

Non-available called but not paid in ordinary share capital to be deducted at group level

Share premium account related to ordinary share capital

Initial funds, members' contributions or the equivalent basic own-fund item for mutual and mutual-type undertakings

Subordinated mutual member accounts

Non-available subordinated mutual member accounts to be deducted at group level

Surplus funds

Non-available surplus funds to be deducted at group level

Preference shares

Non-available preference shares to be deducted at group level

Share premium account related to preference shares

Non-available share premium account related to preference shares at group level

Reconciliation reserve

Subordinated liabilities

Non-available subordinated liabilities to be deducted at group level

An amount equal to the value of net deferred tax assets

The amount equal to the value of net deferred tax assets not available to be deducted at the group level

Other items approved by supervisory authority as basic own funds not specified above

Non available own funds related to other own funds items approved by supervisory authority

Minority interests

Non-available minority interests to be deducted at group level

Deductions for participations in other financial undertakings, including non-regulated undertakings carrying out financial activities

whereof deducted according to art 228 of the Directive 2009/138/EC

Deductions for participations where there is non-availability of information (Article 229)

Deduction for participations included via Deduction and Aggregation method (D&A) when a combination of methods are used

Total of non-available own fund items to be deducted

Total deductions

Total basic own funds after deductions

Ancillary own funds

Unpaid and uncalled ordinary share capital callable on demand

Unpaid and uncalled initial funds, members' contributions or the equivalent basic own fund item for mutual and mutual - type undertakings, callable on demand

Unpaid and uncalled preference shares callable on demand

A legally binding commitment to subscribe and pay for subordinated liabilities on demand

Letters of credit and guarantees under Article 96(2) of the Directive 2009/138/EC

Letters of credit and guarantees other than under Article 96(2) of the Directive 2009/138/EC

Supplementary members calls under first subparagraph of Article 96(3) of the Directive 2009/138/EC

Supplementary members calls - other than under first subparagraph of Article 96(3) of the Directive 2009/138/EC

Non available ancillary own funds to be dedcuted at group level

Other ancillary own funds

Total ancillary own funds

Own funds of other financial sectors
Credit institutions, investment firms

Credit institutions, investment firms, financial institutions, alternative investment fund managers, UCITS management companies

Non regulated undertakings carrying out financial

Total own funds of other financial sectors

Total GWR Funds of Other Financial sectors

Total	Tier 1 unrestricted	Tier 1 restricted	Tier 2	Tier 3
C0010	C0020	C0030	C0040	C0050
5,850	5,850		0	
0				
0	0		0	
0	0		0	
0		0	0	
0				
0	0			
0				
0		0	0	
0				
0				
0		0	0	
0				
4,137	4,137			
0		0	0	
0				
0				
0				
0	0	0	0	
0				
0				
0				
0				
0				
0				
0				
0	0	0	0	
0	0	0	0	
9,987	9,987	0	0	
0				
0				
0				
0				
0				
0				
0				
0				
0				
0			0	
0				
0				
0				
0	0	0	0	

S.23.01.22
Own Funds

Basic own funds before deduction for participations in other financial sector

Own funds when using the D&A, exclusively or in combination with method 1

R0450 Own funds aggregated when using the D&A and combination of method

R0460 Own funds aggregated when using the D&A and combination of method net of IGT

R0520 Total available own funds to meet the consolidated part of the group SCR (excluding own funds from other financial sector and from the undertakings included via D&A)

R0530 Total available own funds to meet the minimum consolidated group SCR

R0560 Total eligible own funds to meet the consolidated part of the group SCR (excluding own funds from other financial sector and from the undertakings included via D&A)

R0570 Total eligible own funds to meet the minimum consolidated group SCR (group)

R0610 Minimum consolidated Group SCR

R0650 Ratio of Eligible own funds to Minimum Consolidated Group SCR

R0660 Total eligible own funds to meet the total group SCR (including own funds from other financial sector and from the undertakings included via D&A)

R0680 Total Group SCR

R0690 Ratio of Total Eligible own funds to Total group SCR - ratio including other financial sectors and the undertakings included via D&A

Reconciliation reserve

R0700 Excess of assets over liabilities

R0710 Own shares (held directly and indirectly)

R0720 Forseeable dividends, distributions and charges

R0730 Other basic own fund items

R0740 Adjustment for restricted own fund items in respect of matching adjustment portfolios and ring fenced funds

R0750 Other non available own funds

R0760 Reconciliation reserve

Expected profits

R0770 Expected profits included in future premiums (EPIFP) - Life business

R0780 Expected profits included in future premiums (EPIFP) - Non- life business

R0790 Total Expected profits included in future premiums (EPIFP)

Total	Tier 1 unrestricted	Tier 1 restricted	Tier 2	Tier 3
C0010	C0020	C0030	C0040	C0050
0				
0				
9,987	9,987	0	0	0
9,987	9,987	0	0	
9,987	9,987	0	0	0
9,987	9,987	0	0	
2,700				
369.91%				
9,987	9,987	0	0	0
2,017				
495.26%				
C0060				
9,987				
5,850				
0				
4,137				
0				

5.25.01.22

Solvency Capital Requirement - for groups on Standard Formula

R0010 Market risk
R0020 Counterparty default risk
R0030 Life underwriting risk
R0040 Health underwriting risk
R0050 Non-life underwriting risk
R0060 Diversification

R0070 Intangible asset risk

R0100 Basic Solvency Capital Requirement

Calculation of Solvency Capital Requirement

R0130 Operational risk
R0140 Loss-absorbing capacity of technical provisions
R0150 Loss-absorbing capacity of deferred taxes
R0160 Capital requirement for business operated in accordance with Art. 4 of Directive 2003/41/EC

R0200 Solvency Capital Requirement calculated on the basis of Art. 336 (a) of Delegated Regulation (EU) 2015/35, excluding capital add-on

R0210 Capital add-ons already set
R0211 of which, capital add-ons already set - Article 37 (1) Type a
R0212 of which, capital add-ons already set - Article 37 (1) Type b
R0213 of which, capital add-ons already set - Article 37 (1) Type c
R0214 of which, capital add-ons already set - Article 37 (1) Type d

R0220 Consolidated Group SCR

Other information on SCR

R0400 Capital requirement for duration-based equity risk sub-module
R0410 Total amount of Notional Solvency Capital Requirements for remaining part
R0420 Total amount of Notional Solvency Capital Requirements for ring fenced funds
R0430 Total amount of Notional Solvency Capital Requirements for matching adjustment portfolios
R0440 Diversification effects due to RFF nSCR aggregation for article 304
R0470 Minimum consolidated group solvency capital requirement

Information on other entities

R0500 Capital requirement for other financial sectors (Non-insurance capital requirements)
R0510 Credit institutions, investment firms and financial institutions, alternative investment funds managers, UCITS management companies
R0520 Institutions for occupational retirement provisions
R0530 Capital requirement for non-regulated entities carrying out financial activities
R0540 Capital requirement for non-controlled participation requirements
R0550 Capital requirement for residual undertakings
R0555 Capital requirement for collective investment undertakings or investments packaged as funds

Overall SCR

R0560 SCR for undertakings included via D&A method
R0570 Total group solvency capital requirement

Gross solvency capital requirement	USP	Simplifications
C0110	C0090	C0120
854		
278		
0		
0		
1,440		
-568		

USP Key

For life underwriting risk:
1 - Increase in the amount of annuity benefits
9 - None

For health underwriting risk:
1 - Increase in the amount of annuity benefits
2 - Standard deviation for NSLT health premium risk
3 - Standard deviation for NSLT health gross premium risk
4 - Adjustment factor for non-proportional reinsurance
5 - Standard deviation for NSLT health reserve risk
9 - None

For non-life underwriting risk:
4 - Adjustment factor for non-proportional reinsurance
6 - Standard deviation for non-life premium risk
7 - Standard deviation for non-life gross premium risk
8 - Standard deviation for non-life reserve risk
9 - None

C0100
120
0
-106
0
2,017
0
0
0
0
2,017

0
0
0
0
0
2,700

0
0
0
0
0
0
0

0
2,700

S.32.01.22
Undertakings in the scope of the group

	Country	Identification code of the undertaking	Type of code of the ID of the undertaking	Legal Name of the undertaking	Type of undertaking	Legal form	Category (mutual/ non mutual)	Supervisory Authority
Row	C0010	C0020	C0030	C0040	C0050	C0060	C0070	C0080
1	MT	213800Z5OLY4GC8CSV65	LEI	First European Title Insurance Company Limited	Non life insurance undertaking	Limited liability company	Non-mutual	Malta Financial Services Authority
2	MT	2138004TRCK9JOHH6T51	LEI	First European Holding Company Limited	Insurance holding company as defined in Article 212(1) (f) of Directive 2009/138/EC	Limited liability company	Non-mutual	Malta Financial Services Authority

S.32.01.22
Undertakings in the scope of the group

				Criteria of influence						Inclusion in the scope of Group supervision		Group solvency calculation	
Country	Identification code of the undertaking	Type of code of the ID of the undertaking	Legal Name of the undertaking	% capital share	% used for the establishment of consolidated accounts	% voting rights	Other criteria	Level of influence	Proportional share used for group solvency calculation	Yes/No	Date of decision if art. 214 is applied	Method used and under method 1, treatment of the undertaking	
Row	C0010	C0020	C0030	C0040	C0180	C0190	C0200	C0210	C0220	C0230	C0240	C0250	C0260
1	MT	Z13800Z5OLY4GC8CSV65	LEI	First European Title Insurance Company Limited	100.00%	100.00%	100.00%		Dominant	100.00%	Included in the scope		Method 1: Full consolidation
2	MT	Z138004TRCK9JOHH6T51	LEI	First European Holding Company Limited	100.00%	100.00%	100.00%		Dominant	100.00%	Included in the scope		Method 1: Full consolidation